



THE NEW HUNTINGTON PARK

COMMUNITY MEETING

September 10, 2020

STIMSON

TONIGHT'S AGENDA

Introduction by Library Director Tina Winstead (<5 min)

Team Introduction (<5 min)

A Brief History of Huntington Park, Henry Huntington, and the Huntington Library (5 min)

Regional Context (5 min)

Huntington Park Design Overview (20 min)

Q&A & Survey (20 min)

INTRODUCTION FROM LIBRARY DIRECTOR TINA WINSTEAD



HUNTINGTON MEMORIAL

LIBRARY

EXPLORE AND CONNECT

TEAM INTRODUCTION



STIMSON at Charbrook Farm, Princeton, MA



Glen Valentine, Principal



Laura Gomez, Senior Associate



Sean Kline, Associate



Ben Turpin, Landscape Designer & Planner

HISTORY

HISTORY



1884 Bird's Eye Map of Oneonta

HISTORY



1884 MAP OF ONEONTA - ZOOM IN TO PARK SITE

WINDSOR HOTEL

SUSEQEHANNA HOUSE

HUNTINGTON HOUSE/
FUTURE LIBRARY

1884 Bird's Eye Map of Oneonta - Zoom-In on Site

HISTORY



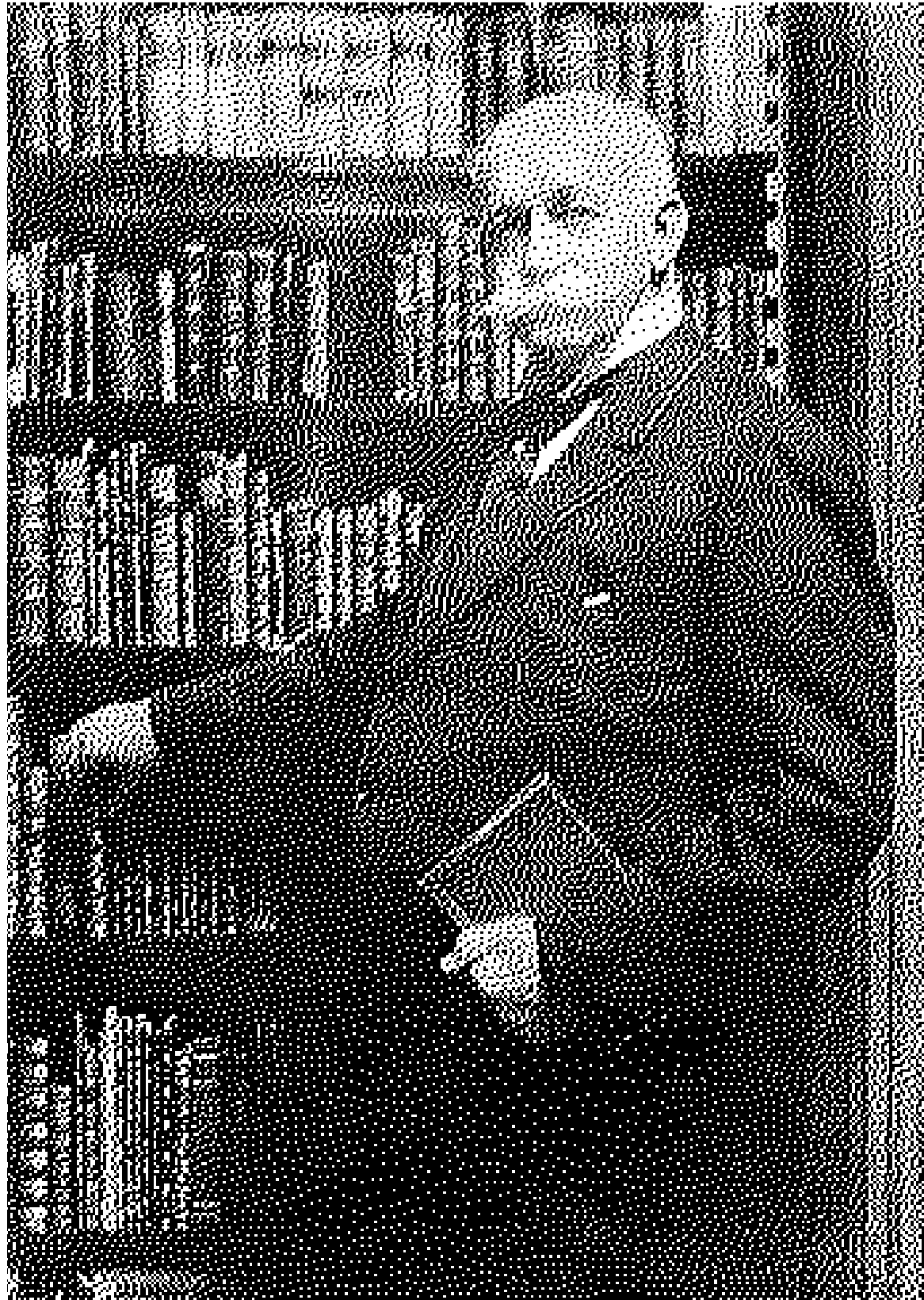
01 ORCHARD & PORTRAIT OF HENRY HUNTINGTON AND FAMILY

Prior to the estate's development into a public park, an orchard was located on the northwestern portion of the park. In the above photo, Huntington and his family are sitting underneath one of the estates many apple trees.

02 1886 ONEONTA SANBORN MAP

On the lower portion of the site, the Metropolitan Theatre (2A), a livery and stable (2B), and a number of other buildings, businesses, and residences once stood. These were demolished or relocated to make way for the public park.

HISTORY



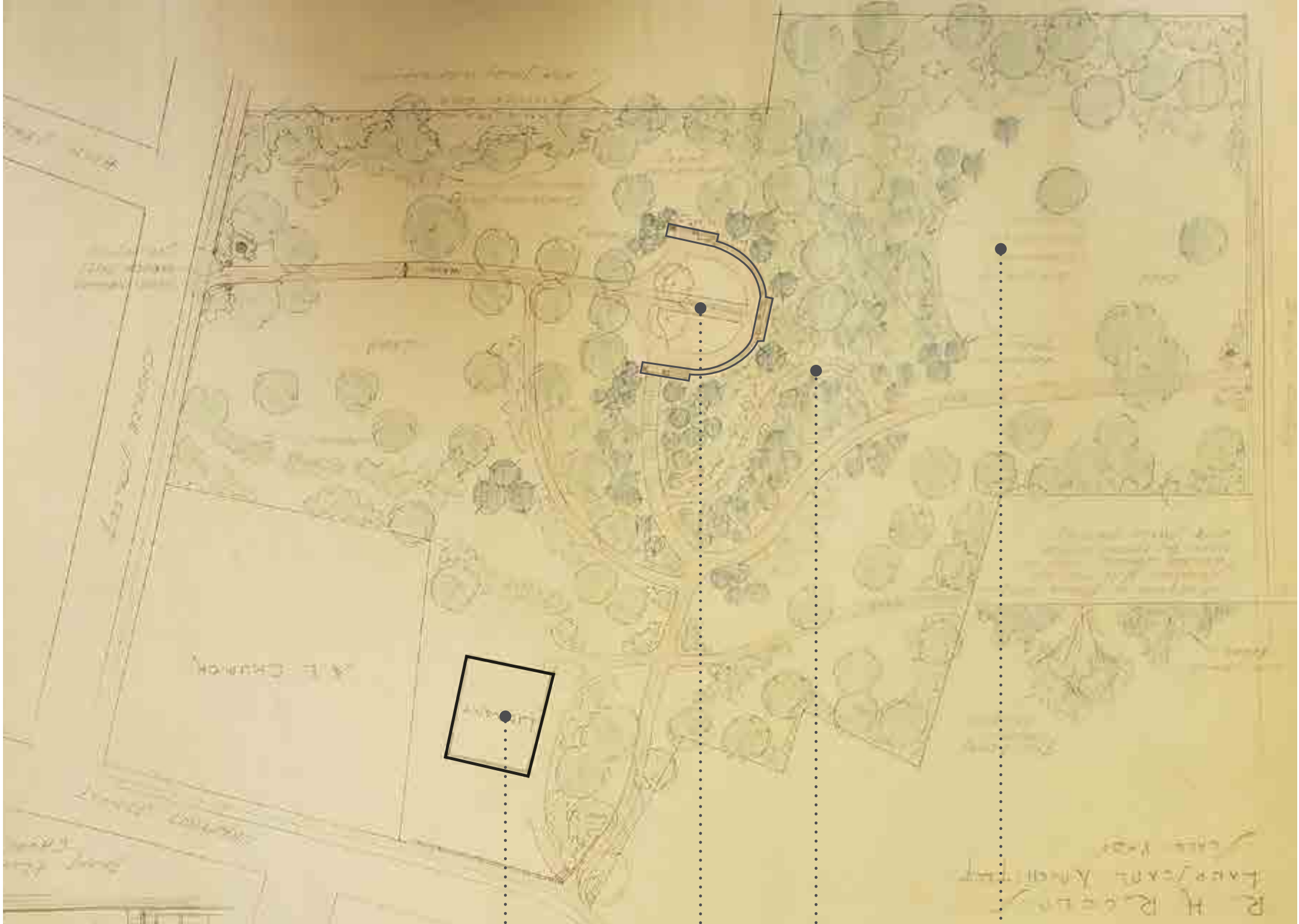
Henry Huntington



THE HUNTINGTON: LIBRARY, ART MUSEUM, AND BOTANICAL GARDEN. THE HUNTINGTON LIBRARY "IS ONE OF THE WORLD'S GREAT INDEPENDENT RESEARCH LIBRARIES, WITH SOME 11 MILLION ITEMS SPANNING THE 11TH TO 21ST CENTURIES," WHILE THE MUSEUM "FEATURES EUROPEAN AND AMERICAN ART SPANNING MORE THAN 500 YEARS AND INCLUDES MORE THAN 42,000 OBJECTS." THE BOTANICAL GARDEN "ENCOMPASS(ES) APPROXIMATELY 130 ACRES OF THE 207-ACRE GROUNDS... CONTAIN(ING) MORE THAN A DOZEN SPECTACULAR THEMED GARDENS." (THE HUNTINGTON)



HISTORY



1933 Improvement Plan to Original James Greenleaf & Henry Huntington Park Design

HISTORY



POSTCARD (1926) SHOWING EARLY PLANTINGS & THE ROTUNDA

HISTORY



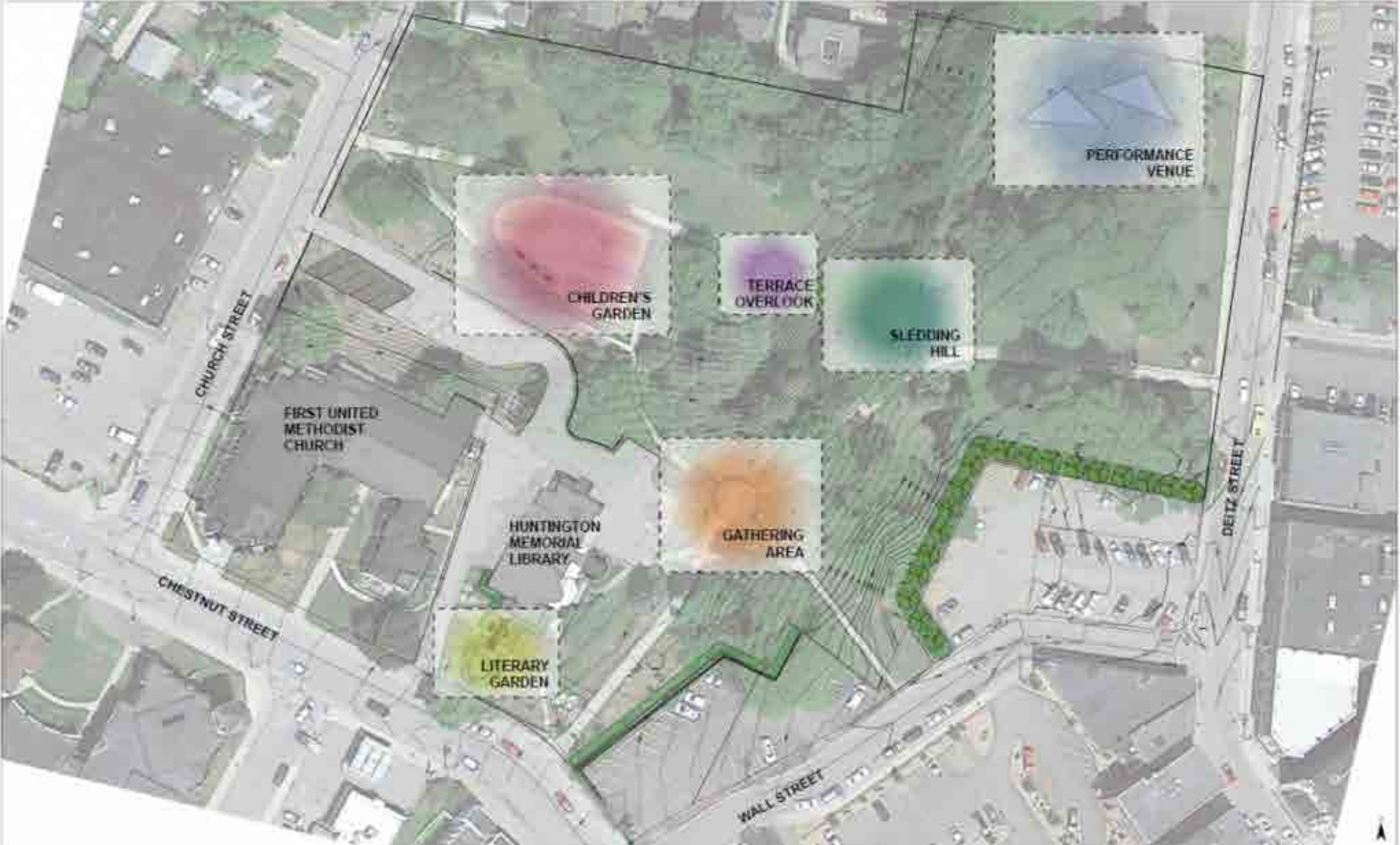
POSTCARD (1949) SHOWING MATURING PLANTINGS ALONG PATH TO LIBRARY

HISTORY



POSTCARD (1939) OF THE CHESTNUT ST. LIBRARY ENTRY

HISTORY - 2017/18 PARK PROGRAM STUDY



Conceptual Plan by Templeton

HUNTINGTON PARK REGIONAL CONTEXT

CONTEXT



WILBER PARK - 56 ACRES

PROGRAMMING/ELEMENTS: PICNIC PAVILION, BASKETBALL COURT, PLAYGROUND, GARDENS, TENNIS COURTS, PUBLIC POOL, MULTI-USE FIELDS, TRAILS & WALKING PATHS

SUSQUEHANNA RIVER PARK - ~100 ACRES

SOCCER FIELDS, ACCESS TO GREENWAY

HUNTINGTON PARK - 5 ACRES

CATELLA PARK - ~11 ACRES

PROGRAMMING/ELEMENTS: MULTI-USE FIELDS, GREENWAY ACCESS, FISHING & MILL RACE ACCESS

NEAHWA PARK - ~64 ACRES

PROGRAMMING/ELEMENTS: MULTI-USE FIELDS, SOFTBALL FACILITIES, SKATE PARK, TENNIS COURTS, BASKETBALL COURTS, VOLLEYBALL COURTS, PICNIC PAVILIONS, PLAYGROUNDS, HODGES POND, RECREATION CENTER, MILL RACE TRAIL, VETERAN'S MEMORIAL WALK

SWART WILCOX HISTORIC PARK - ~30 ACRES

PROGRAMMING/ELEMENTS: HISTORIC HOUSE (OLDEST IN ONEONTA), SOCCER FIELDS, BASEBALL FIELD, COMMUNITY GARDEN

SUSQUEHANNA RIVER PARK: 2 MILES

CONTEXT



FRANKLIN ST.

LAWN AVE.

DIETZ ST.

FORD AVE.

HIGH ST.

CHURCH ST.

MAIN ST.

CHESTNUT ST.

WALL ST.

CONTEXT



CONNECTION TO NEIGHBORHOOD

ADJACENCY TO HOMES - SCREEN WHILE PROVIDING VISUAL CONNECTION

FUTURE MIXED USE DEVELOPMENT

HISTORIC ROTUNDA VIEW
FRAME VIEWS
TOWARDS TOWN

SCREEN PARKING

SCREEN PARKING

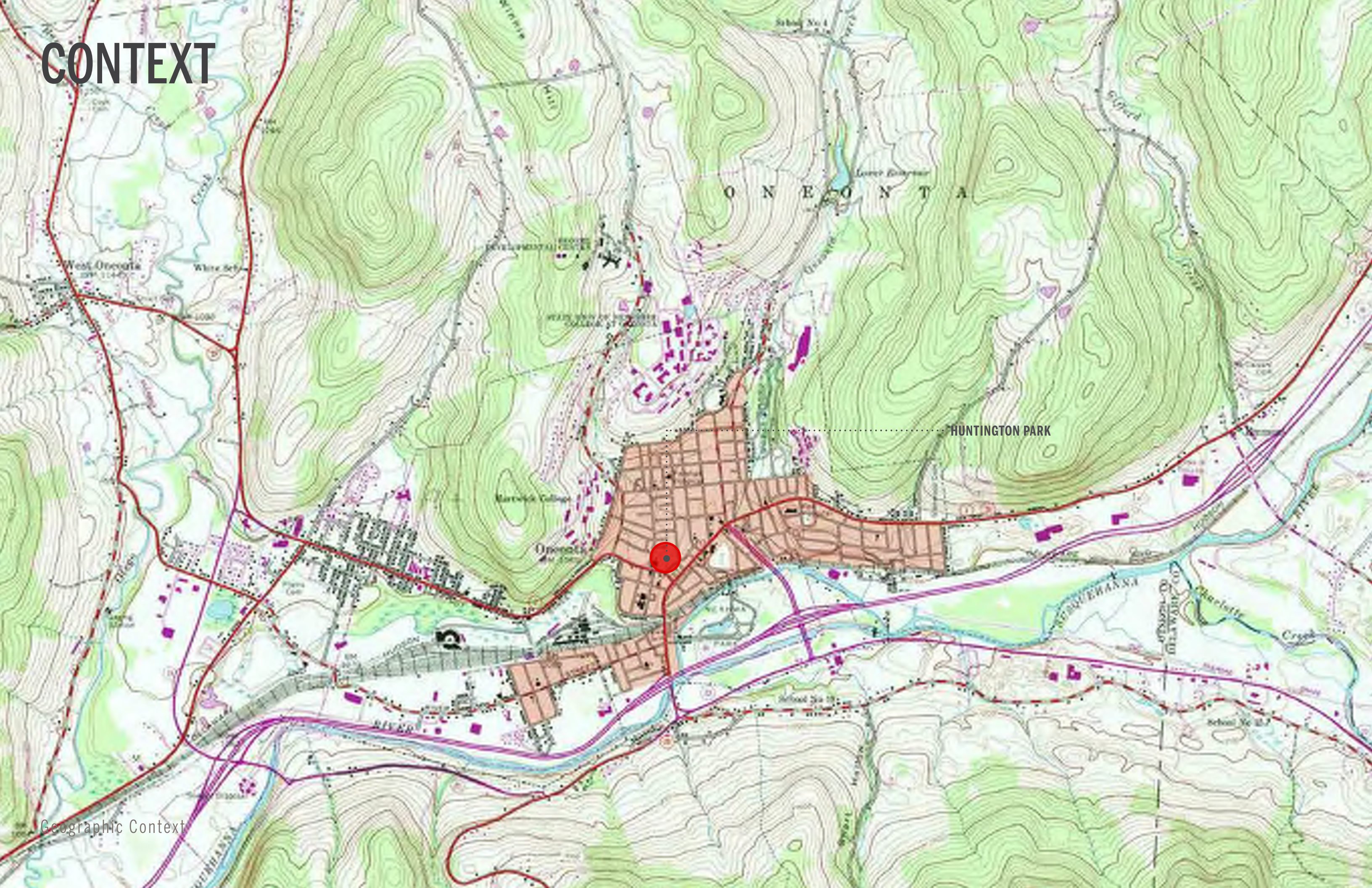
PROVIDE STRONG ENTRY EXPERIENCE

VIEWS FROM MAIN ST.

CREATE CONNECTION FROM DOWNTOWN - BRIDGE THROUGH BUILDING AND PARKING LOT WITH LANDSCAPE CONNECTION

Park Adjacencies

CONTEXT



CONTEXT



Table Rock

CONTEXT



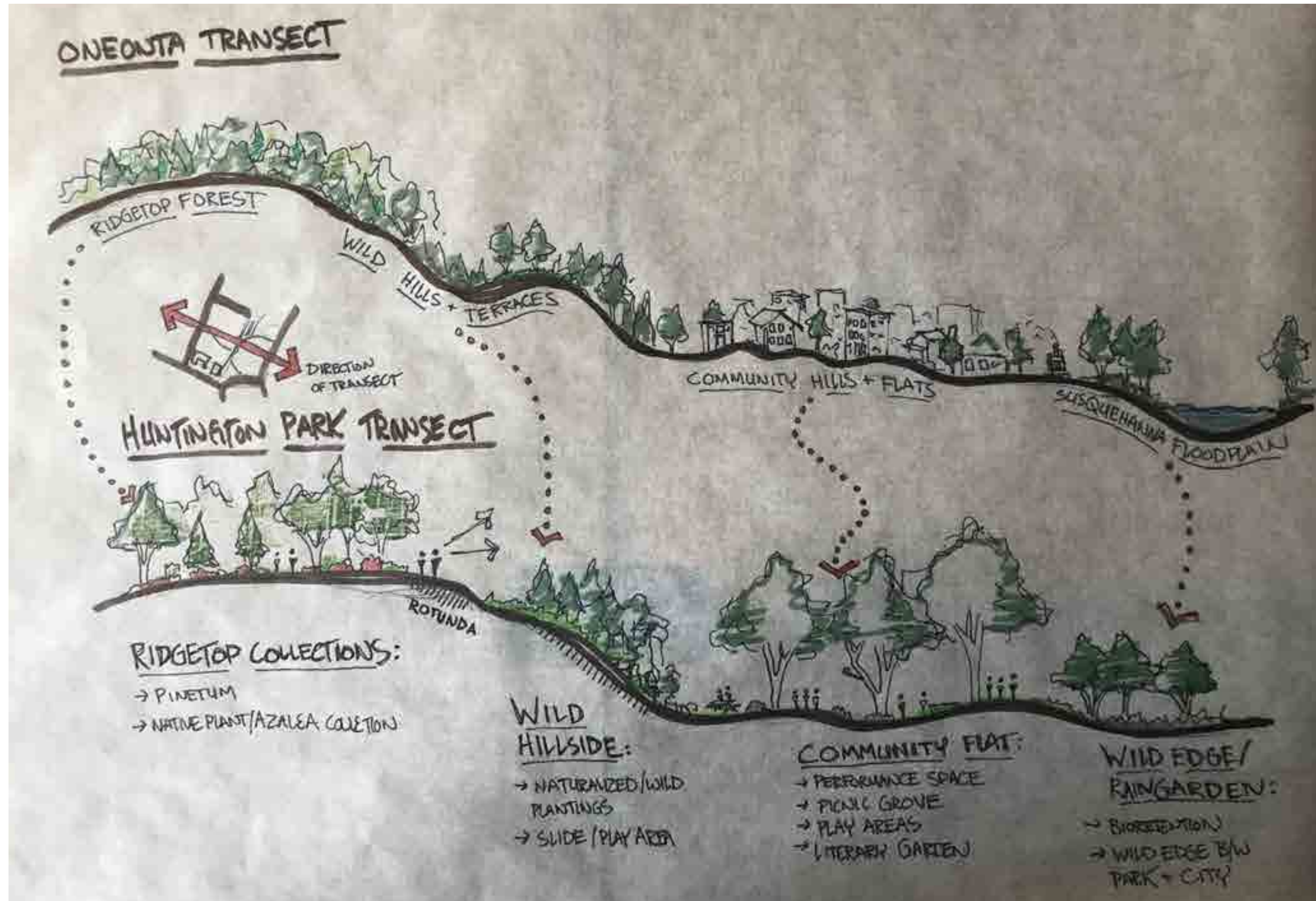
Quarried Bluestone

HUNTINGTON PARK DESIGN

DESIGN



DESIGN



Relation of Geographic Context to Park Design

DESIGN



DESIGN



DESIGN



● 12' LIGHT POLE (MATCHES LIGHT & POLE STYLE ON MAIN STREET)



DESIGN



DESIGN



Play Landscape & Overlook



DESIGN



DESIGN - INSPIRATION IMAGES



STONE PLAY MATERIALS SPEAK TO GEOLOGY OF ONEONTA (PULASKI PARK)



NATURAL PLAY MATERIALS WITHIN PLAY LANDSCAPE (PULASKI PARK)



SLIDE & STONE SCRAMBLE BUILT INTO HILLSIDE (GOVERNORS ISLAND)



CLIMBING LOGS WITH POPS OF COLOR (PULASKI PARK)

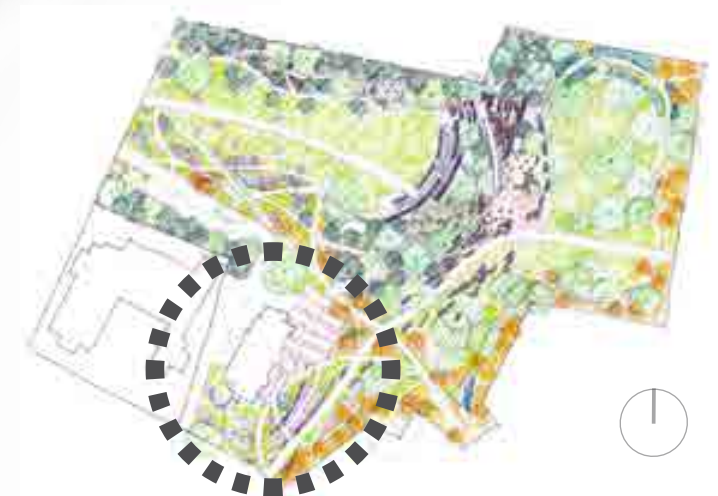


MEADOW LABYRINTH (NICHOLS ARBORETUM)



OVERLOOK TOWARDS DOWNTOWN (FERROUS PARK)

DESIGN



Library Gardens

DESIGN



Library Gardens - Program Zones



DESIGN - INSPIRATION IMAGES



READING NOOK (RADCLIFFE SUNKEN GARDEN)



POLLINATOR GARDEN (CORNELL BOTANICAL GARDEN)



NATIVE MIXED PERENNIAL PLANTINGS (PULASKI PARK)



LILAC WALK (ARNOLD ARBORETUM)



STORMWATER GARDEN (PULASKI PARK)



EVENT TERRACE/PARKING (BENTLEY COLLEGE)

NEXT STEPS

SURVEY OPEN TO COMMUNITY



COMMUNITY SUBMITS SURVEY



IDEAS SYNTHESIZED / RESULTS SHARED



DESIGN REFINED BASED ON SURVEY FEEDBACK



REVISED DESIGN SHARED WITH COMMUNITY

Q&A, SURVEY, AND WRAP-UP

ACCESS SURVEY AT:

<https://www.surveymonkey.com/r/huntingtonparksurvey>

or

<https://bit.ly/35p2xgE>

SURVEY DEADLINE:

Thursday, September 24th (two weeks from tonight)